

Pacific Grove Plaza

2026

Dear Valued Owners and Guests,

Welcome to Pacific Grove Plaza.

We hope you will enjoy this and all future visits to the Monterey Peninsula with its wonderful weather and world-class attractions. We are fortunate to have our resort located right in the middle of a wonderland of outdoor activities and places to explore. For many of us, this is our home-away from home (change of pace) where you can enjoy the fully equipped kitchens and dining rooms to entertain family and friends. If you are one who seeks peace and quiet to enjoy the fog rolling in while you cozy up on a window seat reading, we have it all.

To ensure your stay is the best it can be, we have a full complement of services and exemplary staff to serve you.

Tuesdays are linen change day. You will find a laundry basket in your room. Please use this basket to put out any dirty linen and leave outside your door and we will replace this with clean items.

We pick up trash **daily**. Leave your trash outside your door and we will pick it up and leave you a fresh trash bag.

We have installed new showerheads for ease of use. **Please be gentle with the new showerheads.** They are adjustable, however, if they require more than 5 pounds of pressure to move, **DO NOT FORCE THEM, THEY WILL BREAK.**

To keep our resort totally up to expectations, we need to hear from you when things are not “up to snuff”. Of course we welcome great comments, but we also look to you for feedback regarding things we can do to improve your vacation experience.

Upon check-out, please either leave your key cards and garage remote in your unit, drop into the drop box located in the elevator lobby, or stop by the front desk. Please notify the front desk when your party has completely vacated the room. You may also leave your unit door open.

As always, thank you for being great guests. We enjoy having you with us and hope this stay is your best ever.

Pacific Grove Plaza Management

Wi-fi Network: PGPLAZA

Password: butterfly

www.pacificgroveplazaresort.com

Guest Services

CHECK IN

Check In time is 4:00pm. On Fridays only, check-in is available until 7:00pm. If you, or your guests are arriving late, the resort does have a lock box. Please contact the Front Desk as early as possible to request a lock box and obtain necessary combination and instructions.

CHECK OUT

Check-out time is 11:00am. If you plan to check out before the Front Desk opens at 9:00am on the date of departure, please let the Front Desk staff know the day before. NOTE: The garage remote control and key cards may be left in the box located in the elevator lobby.

Timeshare Etiquette: **Remember to run your dishwasher before you check out.**

COFFEE SERVICE

One coffee packet is provided for the first night of your stay. Additional coffee packets are available for purchase.

ELEVATOR

Our Office hours are 9:00am to 6:00pm, Monday - Thursday, 9:00am to 7:00pm, Friday, and 9:00am to 5:00pm, Weekends and Holidays. After these hours, the elevator will BYPASS the A-level, and our desk enclosure will be locked. The only access to your unit will be through the garage or stairwells. For both, you need your key card; be sure to take it with you at all times.

EMERGENCY

In the event of an emergency, medical or otherwise, please contact the Front Desk for immediate attention. Please familiarize yourself with exit routes and the fire safety guides. The information is posted on the back of each door.

Our parking garage is fully secure. You are given a remote control and a key card at check-in that will allow you access to the IN-GATE on 17th Street. The key also operates the walk-in gates and the fire escape doors. The OUT-GATE on 18th Street is marked EXIT and requires only that you drive up to it for it to open.

GUEST LAUNDRY

There is one washer and dryer located on the C-Level. Laundry detergent and fabric softener are available for purchase at the front desk. Change machine is located in laundry area.

HEATING/COOLING IN THE UNIT

The wall-mounted thermostat in your unit controls heating and ventilation only. THERE IS NO AIR CONDITIONING OR CHILLED AIR. The system's purpose is to circulate the air that is in the building. To cool the unit down, please open windows and let the ceiling fans circulate the cooler air.

LINEN SERVICES

Tuesday is linen exchange day. You will find a laundry basket in the hallway or bedroom closets. Please use this basket to place your dirty sheets and towels outside your room. Fresh linen will be returned and left outside your room. If you would prefer to have this linen exchange on a day other than Tuesday, please contact the Front Desk to make arrangements.

PET POLICY

We are a No-Pet facility. Should you have a service animal, you will need to register it with the Front Desk upon check-in.

SANITARY WIPES

Please do not flush sanitary wipes or baby wipes in the toilet (we have sensitive plumbing). These products have caused serious plumbing issues at the Resort.

SMOKING

The Association has deemed the Resort a non-smoking facility, except for specifically designated areas. Smoking is only permitted in the designated smoking area of the parking garage. If Resort Management finds any signs of a guest disregarding the "No Smoking Policy", an excessive cleaning fee will be charged to that party.

TRASH PICK-UP/RECYCLING

Should you wish trash removal, please tie the trash bag and place it outside your unit door. A member of PGP staff will come by the units to pick up trash and leave a new bag. You may also leave your blue recycling bin outside at the same time; it will be emptied and returned as well.

<http://www.pacificgroveplazaresort.com>

This is the official website for the property specifically. This is NOT the website where you make assessment payments, see upcoming reservations, or exchange. Those items are handled on the Vacatia website.

Home:

This is the landing page when you first arrive on the website. Just a welcome page.

Overview:

Information about resort amenities, nearby amenities, things to do, links to local resources, and a fun gallery of local scenery.

Units:

This page will contain helpful information about the units. Here you will find **Unit Descriptions** and **Floor Plans** highlighted in blue. There is a gallery of images that will be updated regularly and in the future the pictures will also be labelled for which unit they depict.

Auctions:

Most of the year, this part of the website will take your name and email address to be contacted when the auction goes live. Typically, the auction happens in March each year. During that time, this page changes to a form you fill out to submit your bid for the auction.

Resales:

This page contains our current Resale List along with the Resale Authorization form and information on how the resale process works. This list is updated as owners are added and removed and is always dated.

For Owners:

To access the "**For Owners**" section, you will need to log in to the universal owners' account. You will simply need the password: Butterfly

Maintenance Request:

Provide us with information about a maintenance issue and we will address it using the information provided.

Contact:

Basic information about the location, phone numbers and business hours as well as contact details.

We hope you will enjoy using these new services and welcome your comments and suggestions for improving the functions.

UNIT DESCRIPTIONS

B-1 1-bed, 1-bath, single level; A wrought iron winding staircase leads to a loft area set up with two easy chairs. Unit has a bay view from the bedroom and partial view from the living room. The living/dining room area has a vaulted ceiling. The shower is over a whirlpool tub. The unit has no unit above or below it. It faces 18th St. (West) and is 940 sq. ft.

B-2 2-bed, 2 ½-bath townhouse; both the master (king) & guest (2 full) bedrooms are located on the upper level, accessible by the resort elevator. It has great bay views, a balcony and a window seat. With a whirlpool tub and a walk-in shower in the Master bath. This unit faces Central Ave (North). 1539 sq. ft.

B-3 2-bed, 2 ½-bath townhouse; both the master (king) & guest (2 full) bedrooms are located on the upper level, accessible by the resort elevator. It has great bay views, a balcony and a window seat (Master). With a whirlpool tub and a walk-in shower in the Master bath, this unit faces Central Ave (North) and has 1478 sq. ft.

B-4 1-bed, 1-bath, single level; A wrought iron winding staircase leads to a loft area set up with two easy chairs. This unit has a bay view from the bedroom and also a partial view from the living room. The living/dining room area has a vaulted ceiling. The shower is over a whirlpool tub. The unit has no unit above or below it. It faces 17th St. (East) and is 940 sq. ft.

B-5 2-bed, 2-bath, single level; this unit has an extra-large living room and a large balcony. The Master bath has a walk-in shower and stand-alone Jacuzzi tub. It faces 17th St. (East) and is 1744 sq. ft.

B-6 2-bed, 2-bath, single level; this unit has an extra-large living room and a large balcony that is split by “the tree”. The Master bath has a walk-in shower + stand-alone Jacuzzi tub. It faces 18th St. (West) and is 1744 sq. ft.

C-7 2-bed, 2-bath, single level; our only ADA-compliant handicapped unit, this unit has an extra-large master bedroom and bath with a “roll-in” stand-alone shower + separate whirlpool Jacuzzi tub. There is a partial view from the balcony; directly across from the elevator, it faces 17th St. (East) and is 1739 sq. ft.

C-8 1-bed, 1½ bath, flat unit; this large unit features a Jacuzzi tub and a balcony that faces 17th St. (East). 1189 sq. ft.

C-9 1-bed, 1½ bath, townhouse; the unit has an extra-large Master bedroom on D-level (no elevator access). There is a balcony that faces 17th St. (East). 1158 sq. ft.

C-10 2-bed, 2-bath townhouse; the extra-large living room with a vaulted ceiling faces South (Lighthouse Ave). The guest bedroom and bath (shower over tub) are on the main level; the master bedroom and bath are on D-level (no direct elevator access). 1458 sq. ft.

C-11 1-bed, 1-bath, flat unit; A lovely, bright unit, the living room has a vaulted ceiling. The bath features a walk-in shower and whirlpool tub. This unit is directly over the restaurant on Lighthouse Ave. (faces South) and is 841 sq. ft.

C-12 2-bed, 3-bath townhouse; the unit has both bedrooms on D-level (no elevator access). There is a queen sleeper-sofa and a bathroom with a walk-in shower on C-level. There are two balconies; the Master suite has a window seat, and a whirlpool tub. 1216 sq. ft.

C-13 1-bed, 1½ bath, flat unit; this unit boasts a balcony and a Jacuzzi tub. It faces 18th St. (West) and is 1189 sq. ft.

C-14 2-bed, 2-bath, single-level; our largest unit at 1737 sq. ft., its features include a balcony, an extra-large bedroom and a Jacuzzi tub. This unit faces 18th St. (West) and stands alone to the left of the elevator as you exit onto C-level.

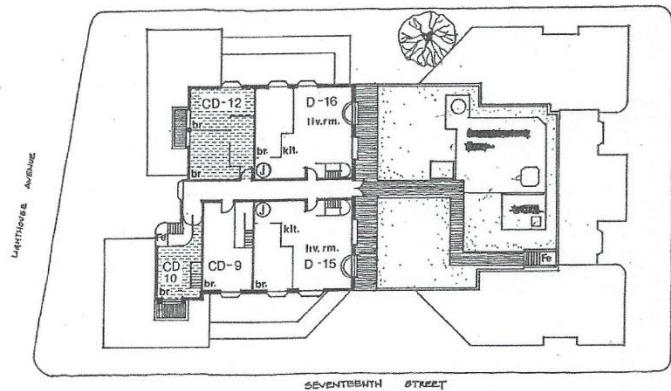
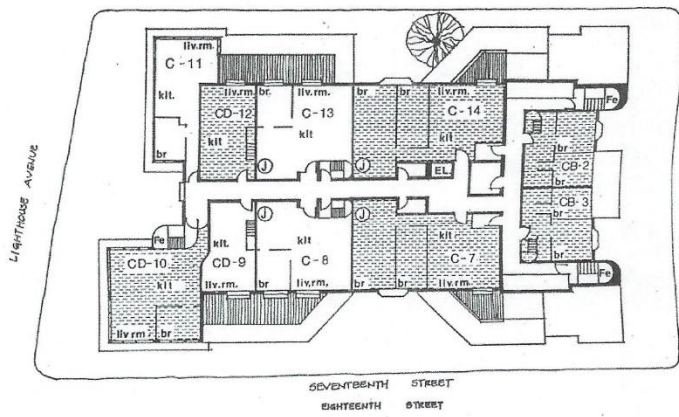
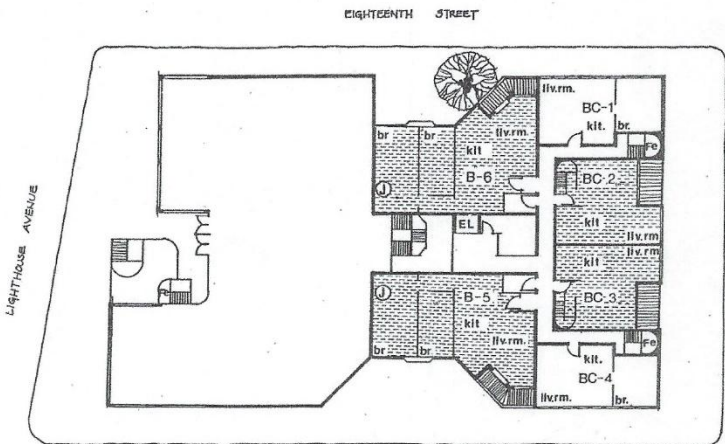
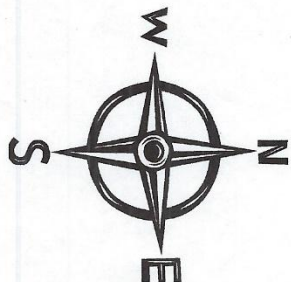
D-15 1-bed, 1½ bath, Penthouse (stairs on C-level lead to one-level unit on D); this unit has no elevator access, but does have wonderful views of the bay from its roof deck. Other features include a Jacuzzi tub and a lovely window seat. This unit faces 17th St. (East) and is 1216 sq. ft.

D-16 1-bed, 1½ bath, Penthouse (stairs on C-level lead to one-level unit on D); this unit has no elevator access, but does have wonderful views of the bay from its roof deck. Other features include a Jacuzzi tub and a lovely window seat. This unit faces 18th St. (West), is 1216 sq. ft.

Pacific Grove



Plaza



Pacific Grove Plaza



2027 USE WEEK CALENDAR

(831)-647-1074 9-9:30AM ONLY

White Season

CALL-IN DAY 2026	USE WEEK 2027	Mon, July 6, 2026	Fri, June 4, 2027	-	Fri, June 11, 2027
		Mon, July 13, 2026	Fri, June 11, 2027	-	Fri, June 18, 2027
		Mon, July 20, 2026	Fri, June 18, 2027	-	Fri, June 25, 2027
		Mon, July 27, 2026	Fri, June 25, 2027	-	Fri, July 2, 2027
CALL-IN DAY 2026	USE WEEK 2027	Mon, August 3, 2026	Fri, July 2, 2027	-	Fri, July 9, 2027
		Mon, August 10, 2026	Fri, July 9, 2027	-	Fri, July 16, 2027
		Mon, August 17, 2026	Fri, July 16, 2027	-	Fri, July 23, 2027
		Mon, August 24, 2026	Fri, July 23, 2027	-	Fri, July 30, 2027
CALL-IN DAY 2026	USE WEEK 2027	Mon, August 31, 2026	Fri, July 30, 2027	-	Fri, August 6, 2027
		Mon, September 7, 2026	Fri, August 6, 2027	-	Fri, August 13, 2027
		Mon, September 14, 2026	Fri, August 13, 2027	-	Fri, August 20, 2027
		Mon, September 21, 2026	Fri, August 20, 2027	-	Fri, August 27, 2027
		Mon, September 28, 2026	Fri, August 27, 2027	-	Fri, September 3, 2027
CALL-IN DAY 2026	USE WEEK 2027	Mon, October 5, 2026	Fri, September 3, 2027	-	Fri, September 10, 2027
		Mon, October 12, 2026	Fri, September 10, 2027	-	Fri, September 17, 2027
		Mon, October 19, 2026	Fri, September 17, 2027	-	Fri, September 24, 2027
		Mon, October 26, 2026	Fri, September 24, 2027	-	Fri, October 1, 2027
CALL-IN DAY 2026	USE WEEK 2027	Mon, November 2, 2026	Fri, October 1, 2027	-	Fri, October 8, 2027
		Mon, November 9, 2026	Fri, October 8, 2027	-	Fri, October 15, 2027
		Mon, November 16, 2026	Fri, October 15, 2027	-	Fri, October 22, 2027
		Mon, November 23, 2026	Fri, October 22, 2027	-	Fri, October 29, 2027
CALL-IN DAY 2026	USE WEEK 2027	Mon, November 30, 2026	Fri, October 29, 2027	-	Fri, November 5, 2027
		Mon, December 7, 2026	Fri, November 5, 2027	-	Fri, November 12, 2027
		Mon, December 14, 2026	Fri, November 12, 2027	-	Fri, November 19, 2027
		Mon, December 21, 2026	Fri, November 19, 2027	-	Fri, November 26, 2027
		Mon, December 28, 2026	Fri, November 26, 2027	-	Fri, December 3, 2027
CALL-IN DAY 2026	USE WEEK 2027	Mon, January 4, 2027	Fri, December 3, 2027	-	Fri, December 10, 2027
		Mon, January 11, 2027	Fri, December 10, 2027	-	Fri, December 17, 2027
		Mon, January 18, 2027	Fri, December 17, 2027	-	Fri, December 24, 2027
		Mon, January 25, 2027	Fri, December 24, 2027	-	Fri, December 31, 2027
CALL-IN DAY 2026	USE WEEK 2027	Mon, February 2, 2026	Fri, January 1, 2027	-	Fri, January 8, 2027
		Mon, February 9, 2026	Fri, January 8, 2027	-	Fri, January 15, 2027
		Mon, February 16, 2026	Fri, January 15, 2027	-	Fri, January 22, 2027
		Mon, February 23, 2026	Fri, January 22, 2027	-	Fri, January 29, 2027
CALL-IN DAY 2026	USE WEEK 2027	Mon, March 2, 2026	Fri, January 29, 2027	-	Fri, February 5, 2027
		Thu, March 5, 2026	Fri, February 5, 2027	-	Fri, February 12, 2027
		Thu, March 12, 2026	Fri, February 12, 2027	-	Fri, February 19, 2027
		Thu, March 19, 2026	Fri, February 19, 2027	-	Fri, February 26, 2027
CALL-IN DAY 2026	USE WEEK 2027	Thu, March 26, 2026	Fri, February 26, 2027	-	Fri, March 5, 2027
CALL-IN DAY 2026	USE WEEK 2027	Mon, April 6, 2026	Fri, March 5, 2027	-	Fri, March 12, 2027
		Mon, April 13, 2026	CLOSED	-	CLOSED
		Mon, April 20, 2026	Fri, March 19, 2027	-	Fri, March 26, 2027
		Mon, April 27, 2026	Fri, March 26, 2027	-	Fri, April 2, 2027
CALL-IN DAY 2026	USE WEEK 2027	Mon, May 4, 2026	Fri, April 2, 2027	-	Fri, April 9, 2027
		Mon, May 11, 2026	Fri, April 9, 2027	-	Fri, April 16, 2027
		Mon, May 18, 2026	Fri, April 16, 2027	-	Fri, April 23, 2027
		Mon, May 25, 2026	Fri, April 23, 2027	-	Fri, April 30, 2027
CALL-IN DAY 2026	USE WEEK 2027	Mon, June 1, 2026	Fri, April 30, 2027	-	Fri, May 7, 2027
		Mon, June 8, 2026	Fri, May 7, 2027	-	Fri, May 14, 2027
		Mon, June 15, 2026	Fri, May 14, 2027	-	Fri, May 21, 2027
		Mon, June 22, 2026	Fri, May 21, 2027	-	Fri, May 28, 2027
		Mon, June 29, 2026	Fri, May 28, 2027	-	Fri, June 4, 2027

Pacific Grove Plaza

2028 USE WEEK CALENDAR

(831)-647-1074 9-9:30AM ONLY

White Season

CALL-IN DAY 2027	USE WEEK 2028	Mon, August 2, 2027	Fri, June 30, 2028	- Fri, July 7, 2028
Mon, August 9, 2027	Fri, July 7, 2028	- Fri, July 14, 2028		
Mon, August 16, 2027	Fri, July 14, 2028	- Fri, July 21, 2028		
Mon, August 23, 2027	Fri, July 21, 2028	- Fri, July 28, 2028		
CALL-IN DAY 2027	USE WEEK 2028	Mon, August 30, 2027	Fri, July 28, 2028	- Fri, August 4, 2028
Mon, September 6, 2027	Fri, August 4, 2028	- Fri, August 11, 2028		
Mon, September 13, 2027	Fri, August 11, 2028	- Fri, August 18, 2028		
Mon, September 20, 2027	Fri, August 18, 2028	- Fri, August 25, 2028		
Mon, September 27, 2027	Fri, August 25, 2028	- Fri, September 1, 2028		
CALL-IN DAY 2027	USE WEEK 2028	Mon, October 4, 2027	Fri, September 1, 2028	- Fri, September 8, 2028
Mon, October 11, 2027	Fri, September 8, 2028	- Fri, September 15, 2028		
Mon, October 18, 2027	Fri, September 15, 2028	- Fri, September 22, 2028		
Mon, October 25, 2027	Fri, September 22, 2028	- Fri, September 29, 2028		
CALL-IN DAY 2027	USE WEEK 2028	Mon, November 1, 2027	Fri, September 29, 2028	- Fri, October 6, 2028
Mon, November 8, 2027	Fri, October 6, 2028	- Fri, October 13, 2028		
Mon, November 15, 2027	Fri, October 13, 2028	- Fri, October 20, 2028		
Mon, November 22, 2027	Fri, October 20, 2028	- Fri, October 27, 2028		
CALL-IN DAY 2027	USE WEEK 2028	Mon, November 29, 2027	Fri, October 27, 2028	- Fri, November 3, 2028
Mon, December 6, 2027	Fri, November 3, 2028	- Fri, November 10, 2028		
Mon, December 13, 2027	Fri, November 10, 2028	- Fri, November 17, 2028		
Mon, December 20, 2027	Fri, November 17, 2028	- Fri, November 24, 2028		
Mon, December 27, 2027	Fri, November 24, 2028	- Fri, December 1, 2028		
CALL-IN DAY 2027	USE WEEK 2028	Mon, January 3, 2028	Fri, December 1, 2028	- Fri, December 8, 2028
Mon, January 10, 2028	Fri, December 8, 2028	- Fri, December 15, 2028		
Mon, January 17, 2028	Fri, December 15, 2028	- Fri, December 22, 2028		
Mon, January 24, 2028	Fri, December 22, 2028	- Fri, December 29, 2028		
CALL-IN DAY 2027	USE WEEK 2028	Mon, February 7, 2028	Fri, January 12, 2028	- Fri, January 19, 2028
Mon, February 14, 2028	Fri, January 19, 2028	- Fri, January 26, 2028		
Mon, February 21, 2028	Fri, January 26, 2028	- Fri, February 2, 2028		
Mon, February 28, 2028	Fri, February 2, 2028	- Fri, February 9, 2028		
CALL-IN DAY 2027	USE WEEK 2028	Mon, March 7, 2028	Fri, February 9, 2028	- Fri, February 16, 2028
Mon, March 14, 2028	Fri, February 16, 2028	- Fri, February 23, 2028		
Mon, March 21, 2028	Fri, February 23, 2028	- Fri, February 29, 2028		
Mon, March 28, 2028	Fri, February 29, 2028	- Fri, March 6, 2028		
CALL-IN DAY 2027	USE WEEK 2028	Mon, April 5, 2028	Fri, March 3, 2028	- Fri, March 10, 2028
Mon, April 12, 2028	Fri, March 10, 2028	- Fri, March 17, 2028		
Mon, April 19, 2028	Fri, March 17, 2028	- Fri, March 24, 2028		
Mon, April 26, 2028	Fri, March 24, 2028	- Fri, March 31, 2028		
CALL-IN DAY 2027	USE WEEK 2028	Mon, May 3, 2028	Fri, March 31, 2028	- Fri, April 7, 2028
Mon, May 10, 2028	Fri, April 7, 2028	- Fri, April 14, 2028		
Mon, May 17, 2028	Fri, April 14, 2028	- Fri, April 21, 2028		
Mon, May 24, 2028	Fri, April 21, 2028	- Fri, April 28, 2028		
CALL-IN DAY 2027	USE WEEK 2028	Mon, May 31, 2028	Fri, April 28, 2028	- Fri, May 5, 2028
Mon, June 7, 2028	Fri, May 5, 2028	- Fri, May 12, 2028		
Mon, June 14, 2028	Fri, May 12, 2028	- Fri, May 19, 2028		
Mon, June 21, 2028	Fri, May 19, 2028	- Fri, May 26, 2028		
Mon, June 28, 2028	Fri, May 26, 2028	- Fri, June 2, 2028		
CALL-IN DAY 2027	USE WEEK 2028	Mon, July 5, 2028	Fri, June 2, 2028	- Fri, June 9, 2028
Mon, July 12, 2028	Fri, June 9, 2028	- Fri, June 16, 2028		
Mon, July 19, 2028	Fri, June 16, 2028	- Fri, June 23, 2028		
Mon, July 26, 2028	Fri, June 23, 2028	- Fri, June 30, 2028		
CALL-IN DAY 2027	USE WEEK 2028	Mon, August 2, 2028	Fri, June 30, 2028	- Fri, July 7, 2028
Mon, August 9, 2028	Fri, July 7, 2028	- Fri, July 14, 2028		
Mon, August 16, 2028	Fri, July 14, 2028	- Fri, July 21, 2028		
Mon, August 23, 2028	Fri, July 21, 2028	- Fri, July 28, 2028		
CALL-IN DAY 2027	USE WEEK 2028	Mon, August 30, 2028	Fri, July 28, 2028	- Fri, August 4, 2028
Mon, September 6, 2028	Fri, August 4, 2028	- Fri, August 11, 2028		
Mon, September 13, 2028	Fri, August 11, 2028	- Fri, August 18, 2028		
Mon, September 20, 2028	Fri, August 18, 2028	- Fri, August 25, 2028		
Mon, September 27, 2028	Fri, August 25, 2028	- Fri, September 1, 2028		
CALL-IN DAY 2027	USE WEEK 2028	Mon, October 4, 2028	Fri, September 1, 2028	- Fri, September 8, 2028
Mon, October 11, 2028	Fri, September 8, 2028	- Fri, September 15, 2028		
Mon, October 18, 2028	Fri, September 15, 2028	- Fri, September 22, 2028		
Mon, October 25, 2028	Fri, September 22, 2028	- Fri, September 29, 2028		
CALL-IN DAY 2027	USE WEEK 2028	Mon, November 1, 2028	Fri, September 29, 2028	- Fri, October 6, 2028
Mon, November 8, 2028	Fri, October 6, 2028	- Fri, October 13, 2028		
Mon, November 15, 2028	Fri, October 13, 2028	- Fri, October 20, 2028		
Mon, November 22, 2028	Fri, October 20, 2028	- Fri, October 27, 2028		
CALL-IN DAY 2027	USE WEEK 2028	Mon, November 29, 2028	Fri, October 27, 2028	- Fri, November 3, 2028
Mon, December 6, 2028	Fri, November 3, 2028	- Fri, November 10, 2028		
Mon, December 13, 2028	Fri, November 10, 2028	- Fri, November 17, 2028		
Mon, December 20, 2028	Fri, November 17, 2028	- Fri, November 24, 2028		
Mon, December 27, 2028	Fri, November 24, 2028	- Fri, December 1, 2028		
CALL-IN DAY 2027	USE WEEK 2028	Mon, January 3, 2029	Fri, December 1, 2028	- Fri, December 8, 2028
Mon, January 10, 2029	Fri, December 8, 2028	- Fri, December 15, 2028		
Mon, January 17, 2029	Fri, December 15, 2028	- Fri, December 22, 2028		
Mon, January 24, 2029	Fri, December 22, 2028	- Fri, December 29, 2028		